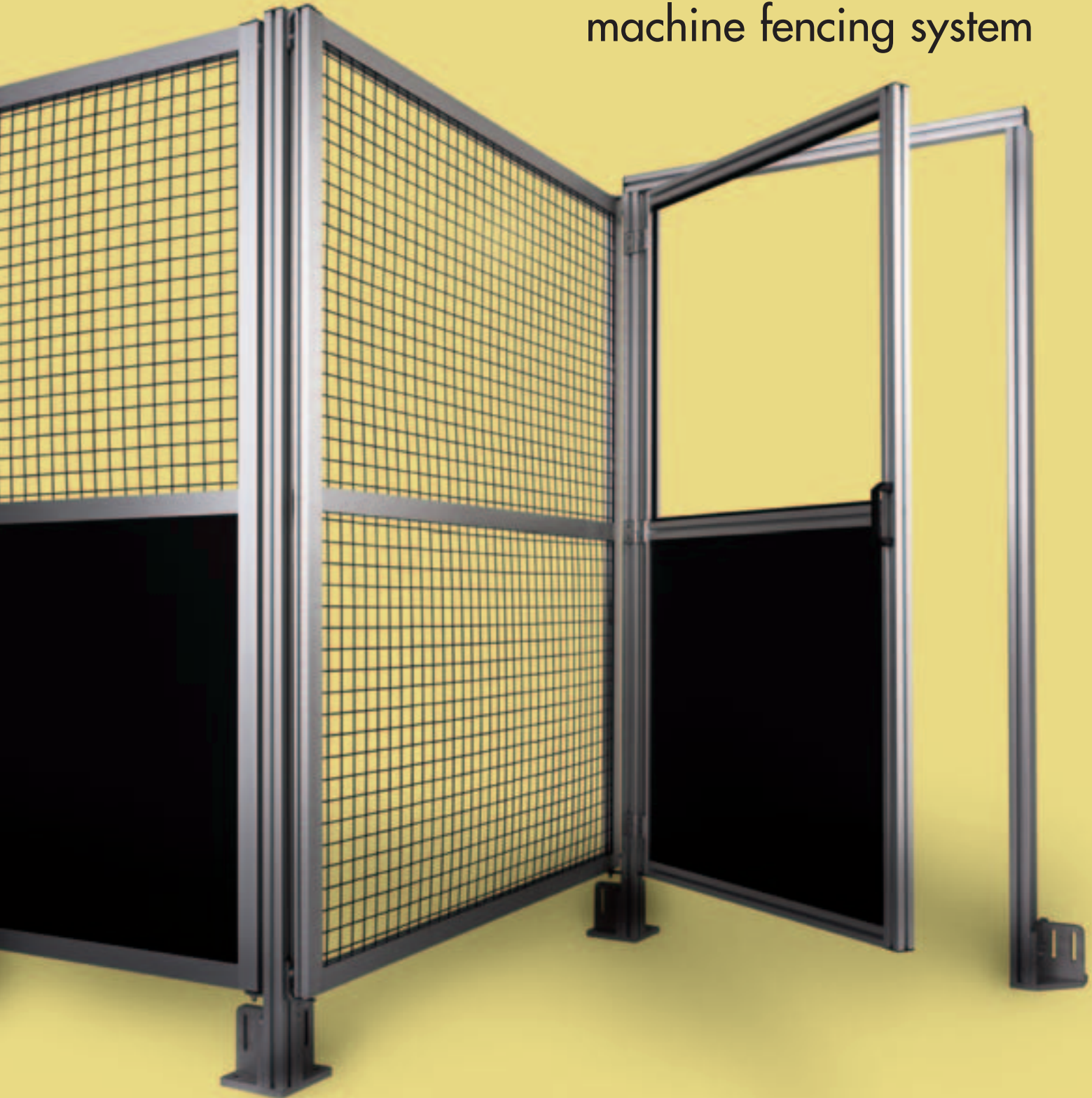


**HepcoMotion<sup>®</sup>**

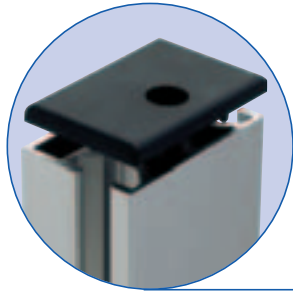
**MFS**  
machine fencing system



# Introducing the MFS Machine Fencing System

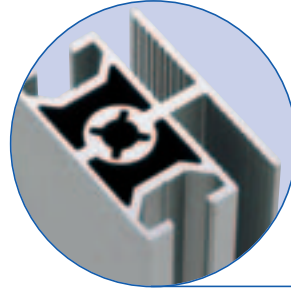
The HepcoMotion MFS Machine Fencing System compatible with our MCS aluminium profile product range provides economical barriers around machine installations such as Gantries, Pick and Place equipment and floor mounted robot systems

Conforming to current Industry standards this maintenance free system is easy to construct and offers a lower cost alternative to steel fence constructions.



## End cap

End caps to close off the slot profiles and vertical profile sections.



## Two-slot profile

Provides a mid section support either vertical or horizontal to break up large single frames and ensure maximum rigidity to the assembled mesh/panel.



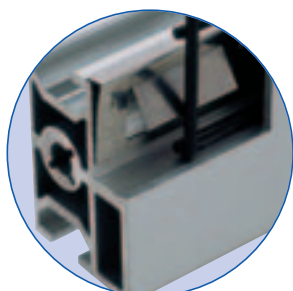
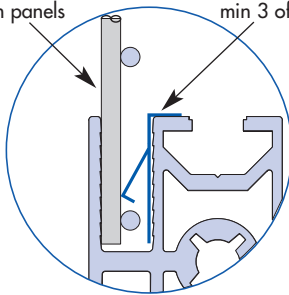
## One-slot profile

A light but very rigid section used for the main frame surround. A deep 8mm wide slot allows an extensive range of mesh and panel options to be fitted in combination with the **Panel retaining clip**. An 8mm T-slot allows further attachment of additional accessories should the need arise.

## Mesh/Panel retaining clip detail

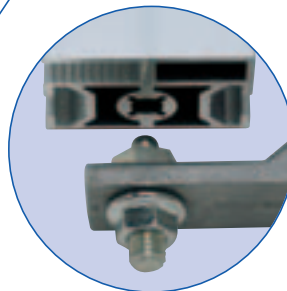
3mm welded mesh or 2-6mm panels

Panel retaining clip, min 3 off/metre



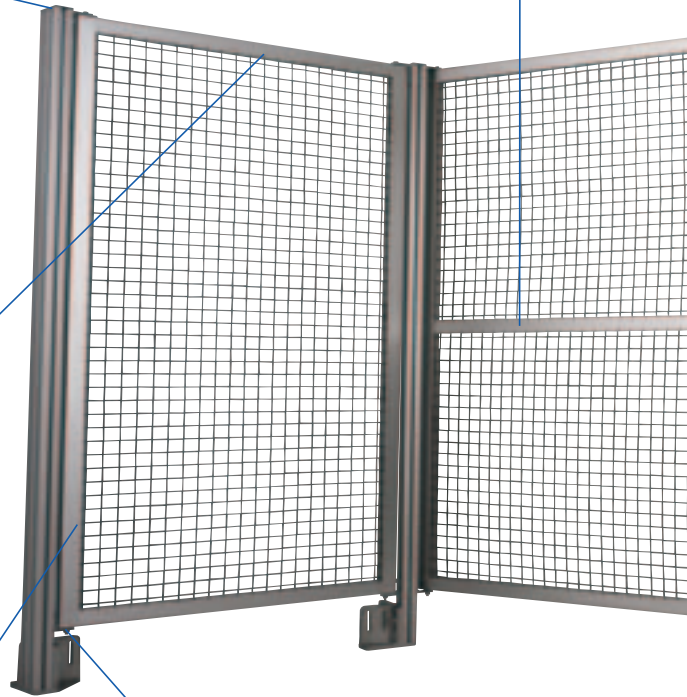
## Panel retaining clip

This unique fixing clip developed by Hepco will ensure that almost all types of wire mesh sheeting or polycarbonate/steel panels which are fitted within the 8mm slot profiles are securely retained and will not rattle or vibrate. Designed for 2-6mm sheet panels and all 3mm wire mesh the sprung feet of the clip ensure universal fitting into the profile slot and the location teeth ensure the clips cannot become dislodged. (8mm panels and 4mm wire mesh do not normally require the additional use of these clips.) The number of clips needed is dependant on the panel material being used.



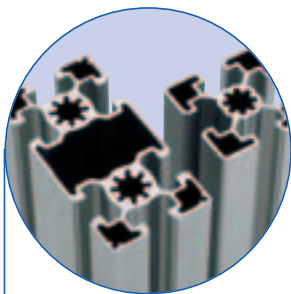
## Panel fixing kit

A complete kit of parts for securing your fencing panel to its vertical post support. The lower bracket with its domed location stud is fully adjustable to allow for small misalignments between the vertical posts. Two bolts at the top are all that is necessary to firmly secure the fencing panel in place no matter what size of panel you are using. The swivel action of the panel fixing kit allows panels to be laid out in at any angle not just 90 degrees.



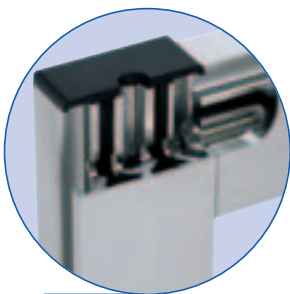
### Vertical post

Utilising our MCS 45 Light and 45/90 Light section the vertical post is secured into the **Foundation Block** with standard T-Bolts and Nuts. The 45/90 Light provides additional support and rigidity where long unsupported runs are necessary, corners, returns and around door frames. The 10mm T-slot allows the panel mounting kit, hinges etc. to be speedily assembled using our standard or sprung loaded T-nuts.



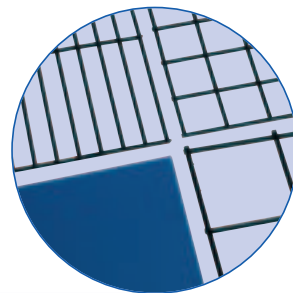
### Connection screws

Used to secure **slot profiles** together and provide a strong and hidden 90-degree joint.



### Sliding doors

A range of sliding door movements can be developed into the Machine Fencing System with or without a lower support profile. The latter is especially useful where clear access is required through the enclosure for say forklift trucks etc.



### Panel options

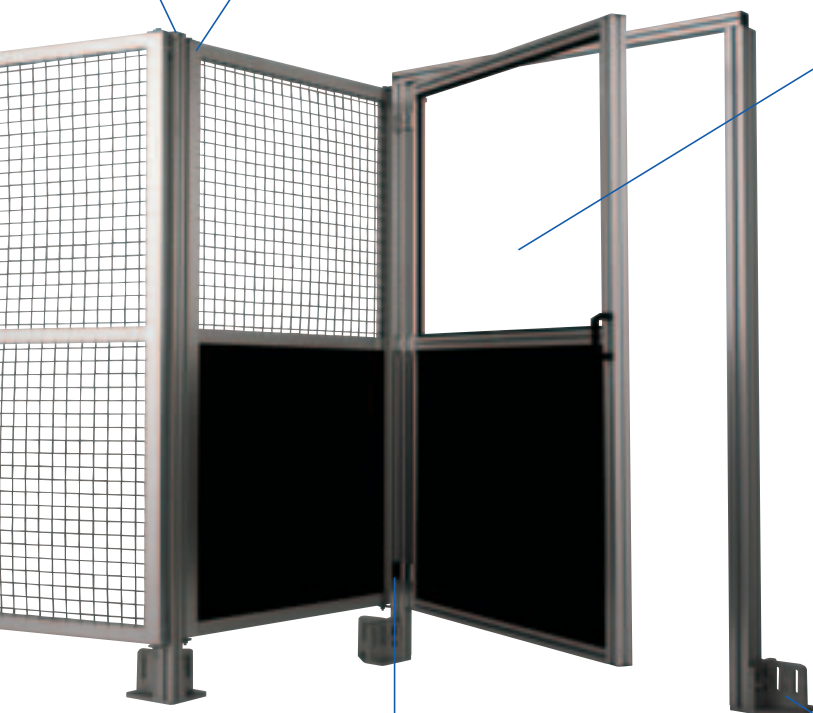
HepcoMotions Machine Fencing System has been developed to allow designers to incorporate an extensive range of standard wire mesh and sheet panel options (special panels to customers design on application) for almost any industrial situation. Panels up to 8mm thick can be fitted directly into the slot profiles.

### Wire mesh

Wire mesh in 3mm Standard Welded either self-coloured or black powder coated 25mm sq, 38mm sq, 50mm sq and 75 x 13 letterbox. (Non-standard 4mm, woven and special painting on request).

### Polycarbonate panels

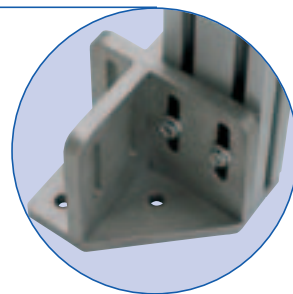
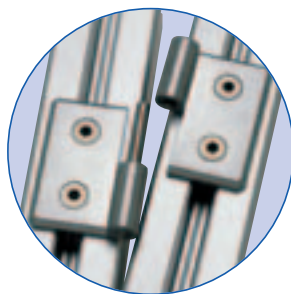
5 and 6mm in clear and coloured versions including dense foam sheet ideal for fencing structures where through visibility is not a requirement.



### Die cast lift off hinge

These plated hinges provide a strong and flexible method of attaching doors or windows and other movable panels within your fencing system.

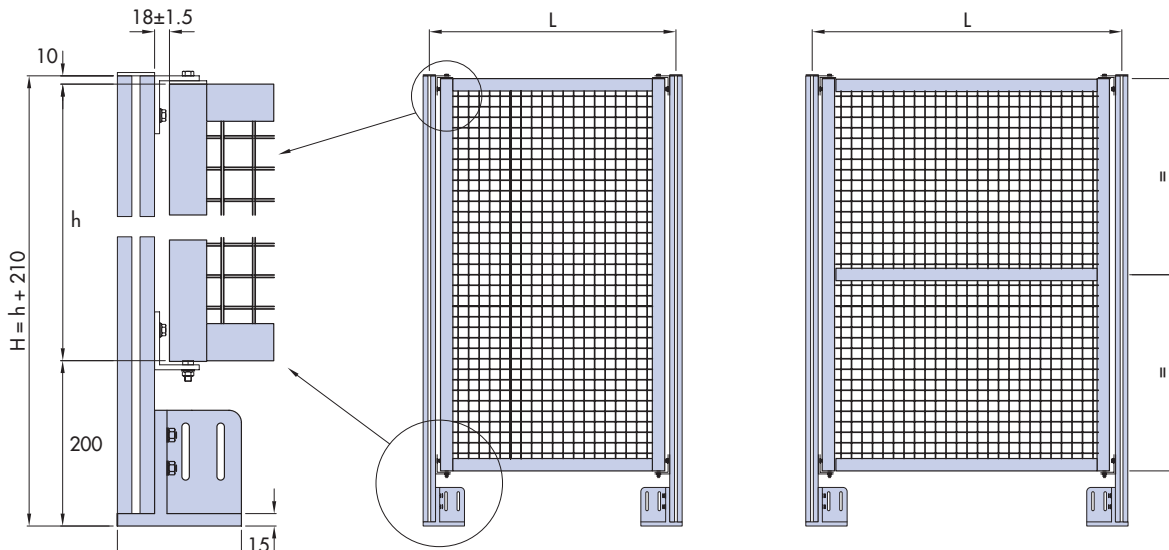
Available in **L/H and R/H Lift off** options as well as a **fixed** version all supplied complete with the necessary fixings to our standard vertical posts.



### Foundation Block Kit

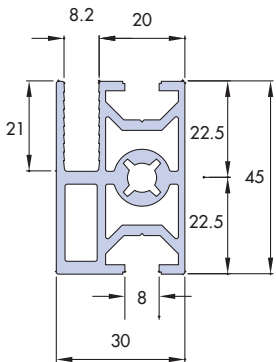
The foundation block will accept the **45L and 45/90L Vertical posts** and is universally handed for all mounting requirements. Supplied complete with necessary **T-Bolts and Nuts**.

# MFS Standard Panel sizes

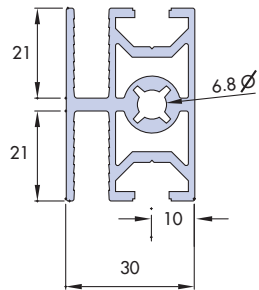


$L = 500, 750, 1000, 1500, 2000$  other sizes available on request     $h = 1800$

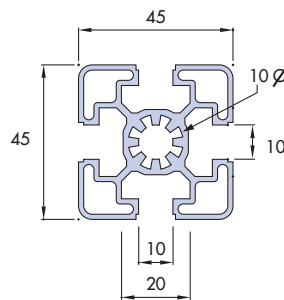
## 0-133-7001 Fencing Profile (1 Slot)



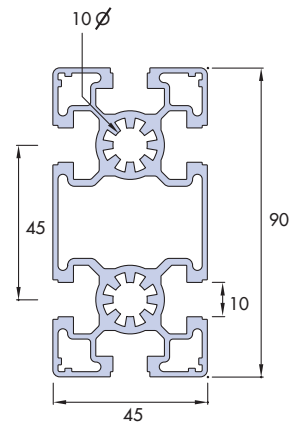
## 0-133-7002 Fencing Profile (2 Slots)



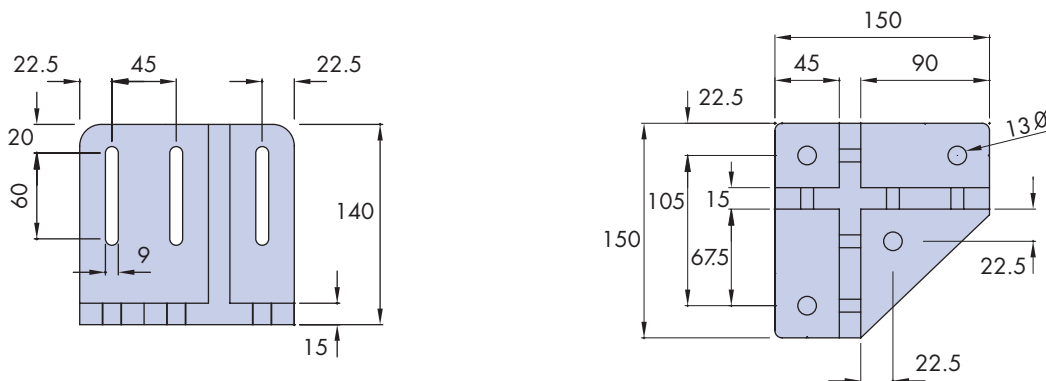
## 0-132-4546 Profile 45x45L



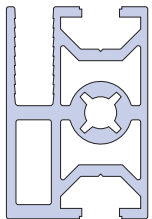
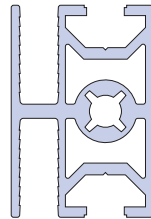
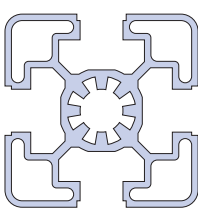
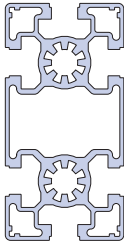
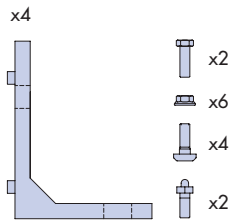
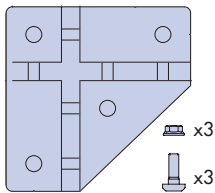
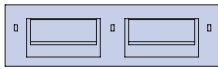

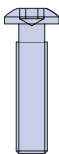
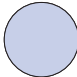
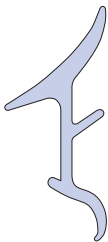

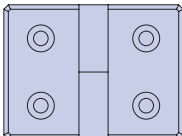
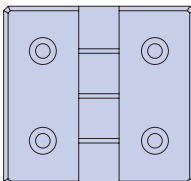
## 0-132-4591 Profile 45x90L



## 1-242-7700 Foundation Block



# Ordering Details

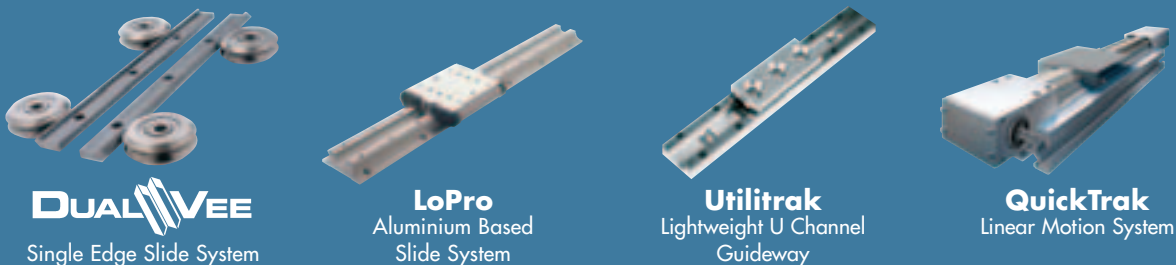
<p><b>0-133-7001</b> One slot profile (random 5.6m)</p> 	<p><b>0-133-7002</b> Two slot profile (random 5.6m)</p> 	<p><b>0-132-4546</b> 45x45 Light profile Random 5.6m</p> 	<p><b>0-132-4591</b> 45x90 Light profile Random 5.6m</p> 
<p><b>1-243-7001S</b> Fixing Bracket set</p> 	<p><b>1-242-7700S</b> Foundation block set</p> 	<p><b>1-243-7003</b> Mesh/panel retaining clip</p> 	<p><b>End caps</b> Slot profile 1-243-7002 45x45 profile 1-243-4042 45x90 profile 1-243-4044</p> 
<p><b>1-242-1034</b> Connection screw for slot profiles <b>1-242-1005</b> Connection screw for 45 &amp; 90 profiles</p> 	<p><b>1-242-2510</b> Sponge retaining strip (retaining mesh in 45 profiles 10mm T-slot)</p> 	<p><b>1-242-1057</b> Glazing strip</p> 	<p><b>1-243-0033</b> Handle for 45 profiles (order with 2 off M8 T-nut 1-242-1002 &amp; M8x20 cap head screw)</p> 
<p><b>1-243-7005S</b> Lift off hinge set RH <b>1-243-7006S</b> Lift off hinge set LH</p> 	<p><b>1-243-8085S</b> Fixed hinge</p> 	<p>HepcoMotion's MFS system can be supplied as pre-assembled panels to the customer's drawings or as individual components for the customer to machine and assemble in their own workshop. Delivery is fast with all major components carried ex-stock</p> <p>We would be pleased to discuss your future requirements for standard MFS components as well as specific non standard items such as locks, switches and specialist panel requirements.</p>	

Please contact our MFS specialists on  
tel: **01884 257000** or fax: **01884 243500**



## BishopWisecarver Product Range

HepcoMotion® - Exclusive European partners and distributors for Bishop-Wisecarver since 1984.



For further information on HepcoMotion® products -  
please request our leaflet 'FPL'

**HepcoMotion®**

Lower Moor Business Park, Tiverton Way, Tiverton, Devon, England EX16 6TG  
Tel: +44 (0)1884 257000 Fax: +44 (0)1884 243500  
Email: sales@hepcotion.com